



Technical Specification						
Models	GV-250	GV-600	GV-650	GV-750	GV-800	GV-900
Video Inputs:	2~16	4~16	4~16	6~12	4~16	8~16
Audio Inputs	N/A	1 channel	2 channels	3 channels	4 channels	4 channels
Recording Speed	20 fps NTSC 15 fps PAL	30 fps PAL 25 fps PAL	60 fps NTSC 50 fps PAL	90 fps PAL 75 fps PAL	120 fps NTSC 100 fps PAL	240 fps NTSC 200 fps PAL
Video Compression Type:	Wavelet, Mpeg-4					
Compression rate	Variable, 300:1 maximum					
Video Resolution:	640x480, 640x480SW, 640x240, 320x240					
Alarms & Sensors*	Input x 72, output x 144 (optional external module required)					
Recording Mode:	Round-the-clock, Motion detect, Schedule, Alarms					
Supported signal Type:	NTSC, PAL					
Supported Network	TCP/IP, Dial-up					
Supported Backup Device	HDD, Network HDD, CD/RW, DVD/R, ZIP, JAZ.					
Supported PTZ control protocols	Canon VCC3, VCC4, Pelco, Ademco, Lilin, Digi, Dynacolor, Kalatel, Samsung, Sony EVI-D100, Panasonic WV-CS850, Mintron 22X zoom, Sensomatic					
Operating System:	Windows 98SE, ME, 2000, XP					
Approvals:	CE, FCC					
Available Languages:	English, Japanese, Traditional Chinese, Simplified Chinese, German, French, Portuguese, Spanish, Russian, Polish					



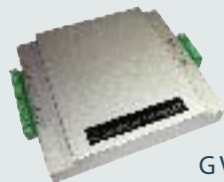
GV-NET

Specification	
Interface	RS-232 to PC 9 pin male-female cable
Communication	To PC: RS232, 9600 To output: RS485, 9600
DC IN	Power Adaptor DC 5V, 1000mA Inner Positive
Dimension	104 (W) x 70 (H) x 32 (D) mm



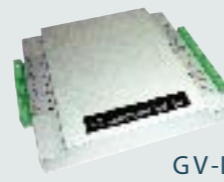
GV-DSP Real Time Display Card

Specification	
Display Rate	480fps
Input	PCI Bus
Compatibility	8, 9, 16 channels (8 and 9 channel models will be available in April.)
Output	TV-Out x 1
Compatibility	GV-600, GV650, GV750, GV800



GV-RELAY

Specification	
Relay Output	8
Relay Control Source	+5V, DO1~DO8 connect Output of GV-IO
Relay Status	Normal Open
Power Consumption	5VDC, 350mA (MAX)
Relay capacitance	6A / 250V AC ; 10A / 125V AC ; 5A / 28V DC
Relay On Time	8 ms
Relay Off Time	5 ms
Dimension	202 (W) x 166 (H) x 39 (D) mm



GV-IO

Specification		
Communication	RS485, 9600 bps	
OUTPUT	Output	16
	Output Circuit	TTL Open Collect
INPUT	Input	8
	Input Signal	0 - 5 V DC ( floating )
	High State	5V
	Low State	0V
Dimension	202 (W) x 166 (H) x 39 (D) mm	

★ All specifications may change without prior notification.



FCC CE



## GV-Series Surveillance System

- All-in-one surveillance solution
- Live monitoring via Internet browser
- Mobile surveillance by PDA and i-Mode
- Versatile MPEG4 / Wavelet compression
- Easy Integration of external alarms and sensors

# GV-Series Surveillance System

## Major Features

### Video Features:

- Up to 16 video inputs
- Supports NTSC and PAL standard
- Multiplexer display in 1, 2, 4, 6, 8, 9, 10, 12, 16 split mode
- Camera scan by single or quad display
- Full screen display
- Up to 480 fps display rate

### Recording Features:

- Flexible Wavelet and MPEG4 compression technology
- Support 640x480, 640x480 de-interlaced, 640x240, and 320x240 recording resolution
- Support full time, pre-scheduled, motion detect, and alarm triggered recording
- Pre / post alarm & pre / post motion recording
- User adjustable recording file size
- Smart recording technology enables recording speed to be adjusted automatically in response to camera's motion
- Up to 4 channels of audio recording

### General Features:

- Dual display operation
- Embedded PTZ and I/O control panel
- User defined PTZ preset position and name
- Pentaplex functionality provides real time functions of recording, playback, monitoring, archiving and transmitting of audio or video.
- Adjustable frame rate and resolution on per camera basis
- Support 800x600 and 1024x768 screen area

### Security Features:

- 4 levels of password protection
- Digital watermark ensures image integrity and prevent tampering
- Hardware watchdog
- On screen warning message in case of video lost
- In case of alarm, motion, video loss, or I/O error, the system will automatically notify user by telephone, pager, or E-mail.

### Search & Playback Features:

- Search file by specific date, time and camera
- Merge recorded video and audio into avi format
- Export recorded video to BMP, JPEG, or GIF format
- Selectable playback speed
- Brightness, contrast, and sharpness adjustment for recorded video



### Remote Playback Features:

- Remotely access to recorded video and audio file
- Play up to 32 channels simultaneously
- Address book function, allows user to create direct links to frequently use GV-System
- Locate files by specific date, time, or camera
- Advanced search function by time frame and range of selected camera
- Data transmission bandwidth control

### WebCam Viewer Features:

- Live monitoring and remote playback via Internet browsers
- Access to 16 channels of live video in a single web page
- Remote PTZ and I/O devices controls
- Enlarge any camera to full screen
- 3 levels of video quality adjustment
- Dynamic IP support
- Locate video server by domain name.
- Allowing one real time audio streaming channel.
- Two way audio communication

### Alarm Features:

- Up to 72 digital inputs (8 inputs per module)
- Up to 144 relay outputs (8 outputs per module)
- Each device can be integrated with camera's motion detection, recording operation, and video transmission.
- Manually control individual output device

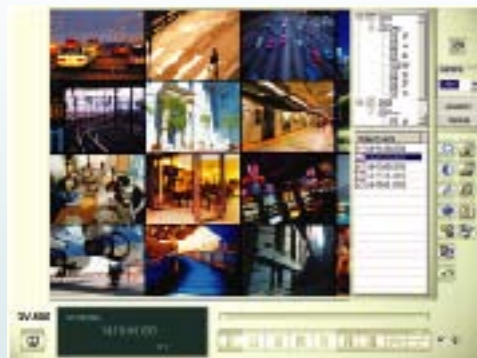


### PDA G-View Features:

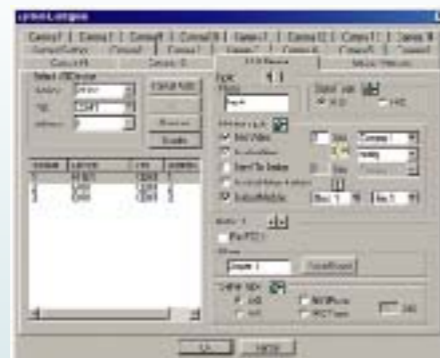
- Mobile surveillance by Win CE PDA
- Wireless access to any network connected GV-System
- Camera switching function
- Take snapshot from live video streams
- Embedded pan, tilt, zoom, and focus control

### i-Mode Features:

- Receive real-time image from any GV-System with touch of a button
- View server information, connection record and list of alarm event



● Search & Playback Screen



● I/O Setup Window



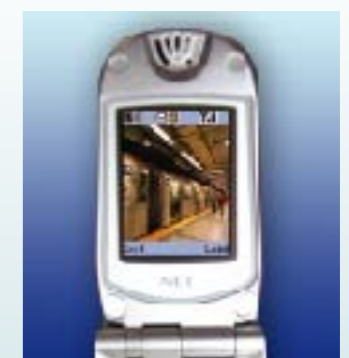
● Password Setup Window



● WebCam Screen



● PDA G-View



● i-Mode View